



DEVELOPING TOGETHER

SOCIAL WORK TEACHING PARTNERSHIP

NEWSLETTER

| Issue 1 | Date: 3 December 2018 |

WHO ARE WE?

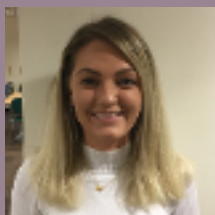
We are the South West London & Surrey Social Work Teaching Partnership aiming to create a world class social work education and employment community. Our vision is to leverage the strengths of our partners to attract, develop and retain the brightest and best social workers in the country. We have a Project Team in place to get the partnership to a position where it has sustainable measures in place to continue to deliver this vision.



Programme Manager
Jonathan Davies



Social Work Lead
Sue Lansley



Project Lead
Libbi Aldred



Admin Support
Penny Heighes

OUR WORK

The work that the Teaching Partnership needs to do has been broken down into 5 streams, each with its own aims and key deliverables. Each of these 'workstreams' has a workstream lead who takes responsibility for the implementation plan, which consists of activities, key milestones and governance points. In order to measure the success of the work being delivered, Key Performance Indicators (KPIs) have been identified and will be used to perform regular evaluations. An external organisation has also been commissioned to carry out a programme evaluation.

HIGHLIGHTS



Kingston University has announced that it will provide membership to the Social Pedagogy Professional Association (SPPA) for all first year students on its 'BA Working with Children & Young People: Social Pedagogy' course. The SPPA is the UK's first and only professional home for pedagogues: www.sppa-uk.org

The Teaching Partnership is recruiting for a Practice Educator Consultant and Practice Educator Development Workers. For more information, or to apply, please visit our website: www.developingtogetherswtp.org.uk

DATES FOR YOUR DIARY

5/12: Innovations in Practice Learning (Sue Taplin 2018) Book Launch

Kingston University, Kingston Hill Campus,
Business School BS0026 3-4:30pm
With Dr Sue Taplin & Prof. Mark Doel
Book at: www.healthcare.ac.uk/events

13/12: In Whose Interest? (Ray Jones 2018) Book Launch

Kingston University, Kingston Hill Campus,
Lawley Lecture Theatre 5:30-7:30pm
With Ray Jones, Emma Lewell-Buck & Sarah Dennis
Book at: www.healthcare.ac.uk/events

GET INVOLVED

There is an exciting opportunity through our Academics in Practice workstream for Social Workers across the partnership to be involved in the **Practice Academic Research Project**. Kingston University is seeking research project proposals that identify an area within a social care service/practice that could be explored with the aim of improving practice. An academic will work with the partner agency to deliver the research and it is planned that six proposals will be agreed in the first phase of this project. All proposals will need to be supported by an identified service/team manager and a practitioner within the employer organisation who will lead the project through the approval process and ensure there is the commitment and support within the organisation to progress the research project through to completion. The proposals will be reviewed by Kingston University and the Teaching Partnership team and the successful proposals will be matched to an academic at Kingston University with the suitable expertise. All proposals will need to be submitted by 18th January 2019 to: admin@developingtogetherswtp.org.uk



SPOTLIGHT ON...



As part of the Curriculum Development workstream, the Teaching Partnership has been recruiting **Teaching Consultants** from across the partnership so that their knowledge and skills can be used to enhance students' learning on the BA and MA Social Work programmes. We have now successfully recruited 30 Teaching Consultants who will be working alongside academic staff at Kingston University to bring frontline social work practice into the classroom. The first induction day for the Teaching Consultants was held in November where the Teaching Consultants got to meet each other for the first time and share their knowledge, skills and experience. The day demonstrated the passion and enthusiasm our Teaching Consultants have for Social Work and their desire to pass this, as well as their knowledge and skills, onto those entering the profession. A lunch was held for the Teaching Consultants to meet the academic staff at Kingston University and the afternoon was spent on training for the Teaching Consultants in assessing the role plays and group exercises that will be used in the new student selection process. Next steps are for the Teaching Consultants to meet again with the academic staff at Kingston so they can begin to plan their teaching. We will keep you posted on how the Teaching Consultants are positively impacting students' experiences of learning and, in the new year, look out for our video blogs of Teaching Consultants and students on our website: www.developingtogetherswtp.org.uk

GET CONNECTED



[developing-together-social-work-teaching-partnership](https://www.linkedin.com/company/developing-together-social-work-teaching-partnership)



www.developingtogetherswtp.org.uk



[@DevelopT_SWTP](https://twitter.com/DevelopT_SWTP)



admin@developingtogetherswtp.org.uk