



DEVELOPING TOGETHER

SOCIAL WORK TEACHING PARTNERSHIP

NEWSLETTER

| Issue 5 | Date: 25 June 2019 |

PRACTICE EDUCATION CONFERENCE

What a day! We were absolutely delighted with both the turn-out and the programme, so thank you again to all contributors. Both guest speakers were truly inspirational and the varied workshops were well attended and generated lots of great ideas for developing practice. So far attendees have said:

"...I really enjoyed and felt like it added to my motivation to make the next step in this area"

"Congratulations for organising such an informative, successful conference. For me it was a learning experience and I enjoyed it"

"Thank you for today. There was laughter, interesting ideas and significant sharing of experiences...feedback workshop was fascinating, it caused me to rethink some things so thank you for providing this opportunity"

"Great speakers Siobhan and Jo. I enjoyed the well organised, informative PE conference last week very much. I hadn't seen Siobhan Maclean before so it was particularly interesting to attend her presentation"

In case you were unable to attend, or want to revisit the learning, there are presentation slides available on our [website](#).

PRACTICE EDUCATION TEAM NEWS

Our Practice Education Team (PET) have had a successful and busy few weeks meeting lots of you across South West London & Surrey, and roadshows in Merton, Croydon and Sutton have been very popular. It's been great talking to people who are established in social work and those who want to become a social worker, and the discussions have ranged from becoming a PE for the first time, to supporting current PEs, becoming an on-site supervisor or becoming a practice assessor of trainee PEs. Additionally we have had conversations with you about CPD, career coaching, and ASYE. We continue to develop our PE hub on the Developing Together [website](#), which gives details of up and coming events, but also has lots of new resources about practice education. Additionally we are continually adding to our library of books and materials we can loan out to partners e.g. social work theory and reflective cards (Siobhan Maclean), Supporting Struggling Students on Placement (Jo Finch) and SHARE (Finch, Maclean & Prosper), which was extremely popular at our Practice Education Conference. Contact [Paul Lawrence](#), [Dale Van Graan](#), [Josie Newton](#) or [Sarah Cave](#) for more information,

DATES FOR YOUR DIARY

09/07: NSPCC Training: Harmful Sexual Behaviour
The Chaucer Centre, Canterbury Rd, SM4 6PX 9:30am-1pm

11/07: Nuffield Research Briefing: demand management and the crisis in children's social care - with Rick Hood
Twickenham Training Centre, TW1 1BY, 9:30-11:00am

You can find details of all our events, and how to book, on our [website events page](#).

PARTNER NEWS



Claire Migale - Merton Adults PSW

"The first of many Adult Social Care Conferences in Merton. We are lucky to have so many amazing speakers to inspire us on our journey of a strengths based approach"

Lynn Romeo - CSW for Adults

"Delighted to be with social care staff @MertonCouncil today celebrating their strengths based practice journey"

Nicki Shaw - Croydon Children Head of Workforce Improvement

"Fantastic Excellence in Practice Awards yesterday! I'm so proud of Croydon EH and CSC practitioners. Thank you so much @IsabelleTrowler @HackneyChild @ProfDavidShem for supporting the event."

NATIONAL EVALUATION PUBLISHED

The National Evaluation of Teaching Partnerships (TPs) was published last week. The interim report states "The [TP] programme has stimulated new levels of collaboration to the way social work education is designed, planned and delivered...". Our TP has a dedicated Practice Education team and 30 Teaching Consultants; these roles are considered to be 'critical to the pace and level of work' and it has been reported that 'partnerships perceive that new approaches are leading to improvements in placement quality.' In terms of academic and practice collaborations, the report states that most TPs have attempted activity to support academics to spend time in frontline teams, refreshing their experience and observing contemporary practice. Work is underway to progress this vital initiative within our TP, so look out for academics coming soon to a frontline team near you! You can read the report [here](#).

STUDENT ADMISSIONS & PLACEMENTS

This month saw the annual review of student admissions processes, with colleagues from Kingston University (KU), our Service User & Carer Group (SUC), Teaching Consultants (TCs) and Local Authority (LA) partners coming together to evaluate 2018 admissions and plan for 2019. One of the first Teaching Partnership (TP) activities back in 2018 was to increase the entry level requirements for the BA course, as well as to introduce roleplays for the MSW course. Since then, practitioners and SUCs have also played a much more central and determining role in student selection. After some lively discussion, proposals have been put together to further enhance the processes for 2019.

June also marked the TP's first ever 'Placement Allocation Day' (PAD) where KU and LA and PVI partner agencies met to agree final placements for BA students, due to go out in September. The day was such a success that we will be making the event a regular occurrence, introducing it 4 times a year to plan for upcoming placements.

SOCIAL WORKER WELLBEING UPDATE

Following on from our Emotional Wellbeing & Resilience Conference held in March, the TP Principal Social Worker (PSW) group has been working together to progress social worker wellbeing initiatives across the region. Take a look at your organisation's offer around your wellbeing as well as joining in with the #wellbeingwednesday where self care tips are shared each week for you to focus on your own and your colleagues' wellbeing. Although we are all guilty of allowing our own wellbeing to be at the bottom of our list of priorities, we know that self-care can help us be the best we can be for the people with which we work. We are holding a further social worker wellbeing event on 27th September, so put this date in your diary and watch this space for news on speakers and workshops. Our last event was fully booked and received great feedback! We are also in the initial stages of creating a wellbeing hub on the developing together website and any news of wellbeing initiatives or events in your team/organisation would be gratefully received so that we can showcase best practice across the region.

ACADEMICS IN PRACTICE EVENTS

On 29th May, colleagues from across the Partnership made their way to the Town Hall in Croydon to attend a seminar on Liberty Protection Safeguards (LPS): Proposed Replacement of the Deprivation of Liberty Safeguards (DoLS). Tim Spencer-Lane, who is legal adviser to the government on the bill to replace the DoLS, delivered the session. This event was so well received by partners, that we will be rolling it out again in a few months, so if you missed out last time, there will be another opportunity to hear about the upcoming changes.

Our Research Development Event was held on 11th June, where Dr Rick Hood shared his findings so far on the Nuffield Research Project "Inequalities in children's social care". Maria Brent introduced the Teaching Partnership research projects: the use of outcome measures in children and families social work (Merton & Surrey), self-neglect and hoarding (Merton Adults and Kingston Adults), the use of restorative group supervision (Sutton), and the careers of practice educators (cross-Partnership). Dermot Brady explored a research proposal on team culture and its impact on retention as an exercise to develop a further research proposal. From this workshop we have been able to develop our research question on this topic, and the next step is getting approval from Kingston University's ethics committee. The afternoon saw an interesting taster session of the Vanguard method, which combines systems thinking and intervention theory. As part of our Academics in Practice workstream, we will continue to provide lunch/breakfast and learn sessions with messages from research. In July Dr Rick Hood will be running a further session on the Nuffield inequalities in social care.

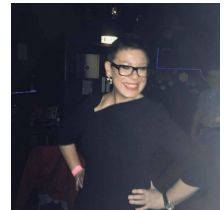
OPERATIONAL BOARD



June's Operational Board was opened up to everyone involved in the TP to celebrate our successes, review our challenges, and begin sustainability planning for when DfE funding is due to cease (March 2020). We also had a presentation from our Programme Evaluators, Skills for Care. Thanks to everyone who got involved!

WELL DONE TO...

A big 'well done' to Louise Jones, PSW Wandsworth Children, and Nicki Shaw, Head of Workforce Improvement Croydon Children, for becoming NAAS (National Assessment and Accreditation System) accredited.



GET CONNECTED



[developing-together-social-work-teaching-partnership](https://www.linkedin.com/company/developing-together-social-work-teaching-partnership)



www.developingtogetherswtp.org.uk



[@DevelopT_SWTP](https://twitter.com/DevelopT_SWTP)



admin@developingtogetherswtp.org.uk